

MIDDLETON TREE SURVEY 2009



1



2



3



4



5



6



13



14



15



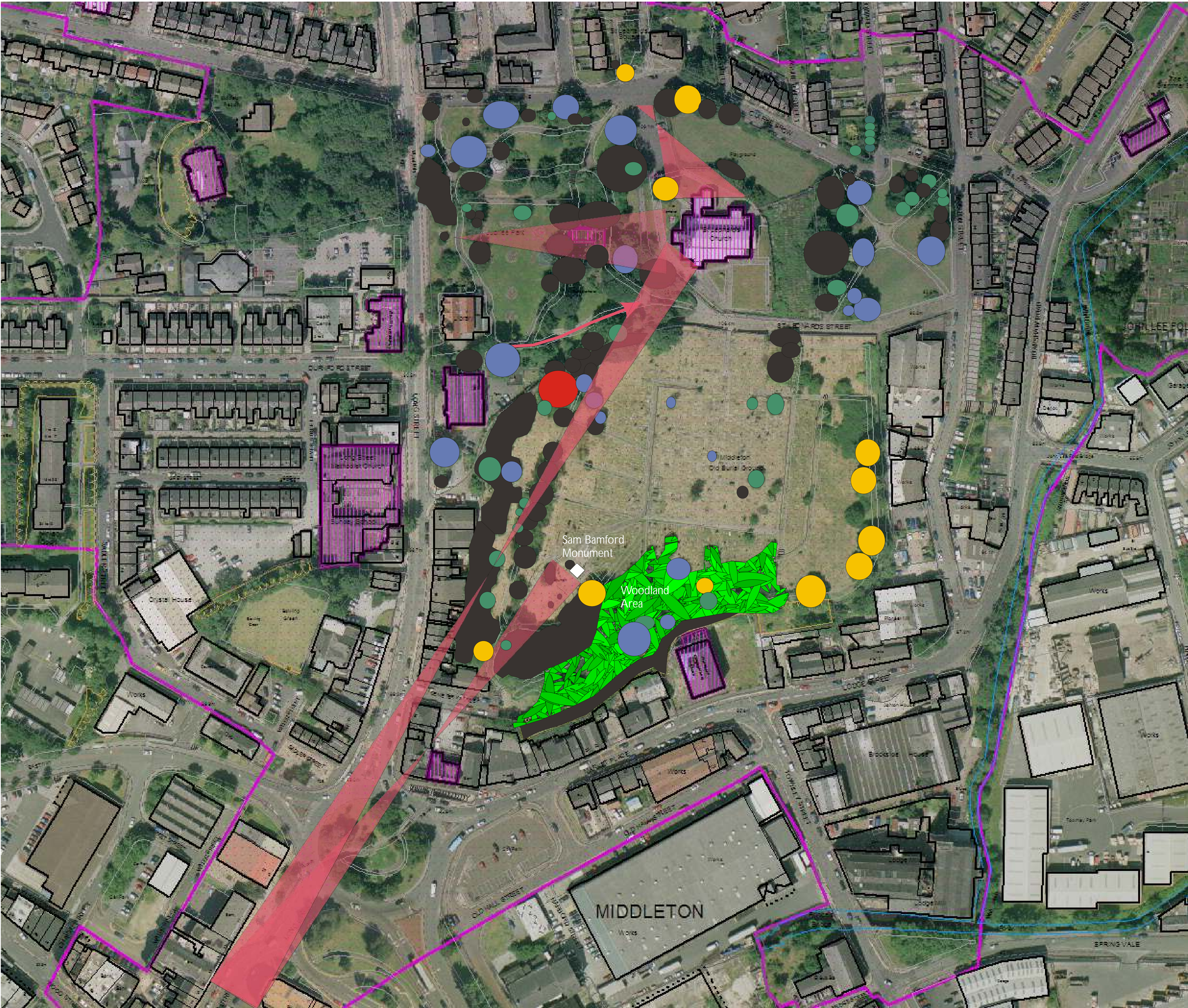
16



17



18



7



8



9



10



11

| KEY | |
|--------------------------|--|
| Local Interest Grade 1 | |
| Local Interest Grade 2 | |
| Substantial Contribution | |
| Slight Contribution | |
| Negative | |
| Listed Building | |
| CA Boundary | |
| View | |
| Vista | |
| Woodland Area | |

PHOTOGRAPHS

1 Rear of Long St properties from Old Burial Ground.
2 Path through Woodland Area.
3 East along New Street.
4 St Leonard's Church from the Old Burial Ground.
5 View of St Leonard's from car park.
6 Looking west towards St Leonard's.
7 Land East of St Leonard's Church from St Leonard's Street.
8 Old Burial Ground from gates, looking south.
9 East from the Old Burial Ground.
10 Jubilee Park.
11 Woodland Area.
12 View from Woodland Area across Market Place.
13 St Leonard's Church and the Exedra from Jubilee Park.
14 NE up St Leonard's Street.
15 Local List 1 Beech Tree.
16 Band Stand in Jubilee Park.
17 Line of Poplar Trees NW of Sam Bamford Monument, to be cleared at lowest 10-12ft.
18 Local List 2 unidentified species of tree north of Cemetery Street.

TREE SURVEY GROUP

From left: Revd Nick Fiest, St Leonard's Church; Kerrie Smith, Trainee Planning Assistant, Rochdale MBC; Christine Grime, Chairlady of Middleton Heritage and Conservation Group; Geoff Grime, Member of Middleton Heritage and Conservation Group; Carey Robinson, Natural Signposting Officer Rochdale MBC.



12

11